

MTA GATEWAY INSTALL INSTRUCTIONS

DSL

For Gateway models VMG4927 & VMG4825

Fiber

For Gateway model EMG6726

1 Connect the new Gateway

- Using the gray DSL cable provided, plug one end into a wall jack and the other end into the port labeled DSL on the Gateway.

1 Connect the new Gateway

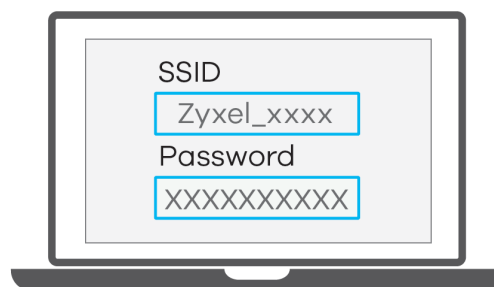
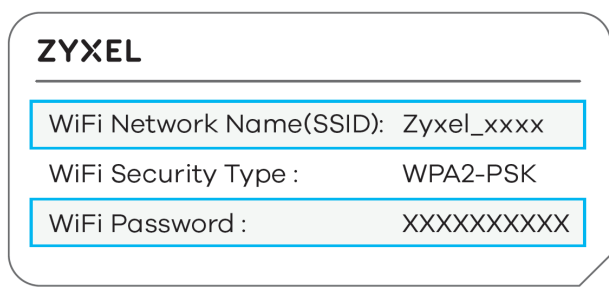
- Using the Ethernet cable provided, plug one end into a wall jack and the other end into the port labeled WAN on the Gateway.

2 Connect the power supply

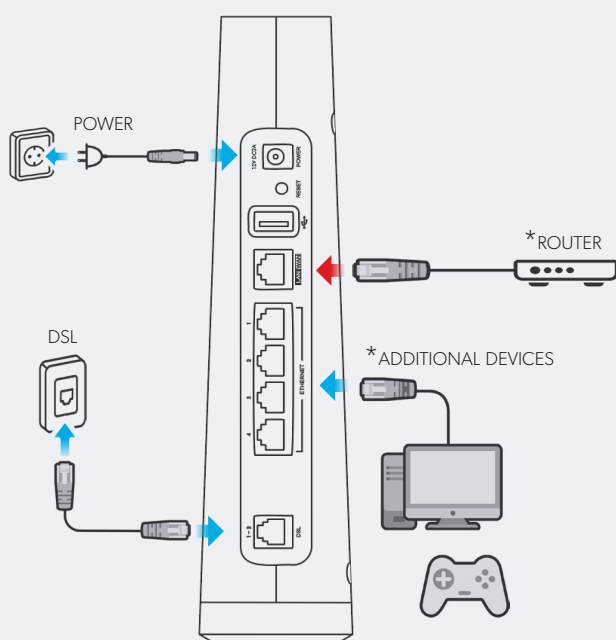
- Plug the new power supply into the Gateway, then plug the other end into an electrical outlet.
- After plugging in the Gateway, wait for it to connect to the network (indicated by a **GREEN** light next to the  icon) before proceeding to the next step.
- If the network light does not turn **GREEN** after 5 minutes, try another jack. Repeat the above steps until the network  icon turns **GREEN**.

3 If using totalWiFi™, connect by using the information on your Gateway

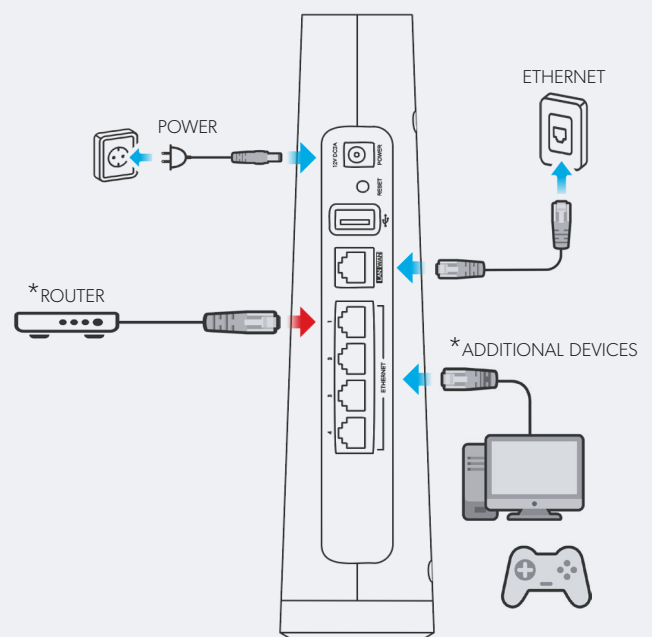
- To connect to totalWiFi™ use the WiFi Network Name (SSID) and WiFi password that are printed on the device label.




DSL Wiring Diagram For Gateway models VMG4927 & VMG4825



Fiber Wiring Diagram For Gateway model EMG6726



***Additional devices** - Devices such as TV's, computers, or gaming consoles can be plugged directly into the Gateway.

***Router (if not using totalWiFi™)** - Gateway is in Bridged mode by default. If you are not using totalWiFi™, you can plug your own router into the port labeled WAN (DSL) or port #1 (Fiber) as indicated by  in the wiring diagram.

MTA MODEM INSTALL INSTRUCTIONS


1 Remove the old modem

- Unplug the power supply from the wall.
- Disconnect the GREY cable from the wall that plugs into the DSL port on the modem.
- Disconnect any Ethernet cables that are plugged into the modem if applicable.
- Set the old modem, power cable and GREY DSL cable aside.

2 Connect the new modem

- Plug the new GREY DSL cable into the same jack on the wall as the previous modem.
- Plug the GREY cable into the DSL port on the modem.
- Reconnect any Ethernet cables that were previously plugged in.

3 Connect the power supply

- Plug new power supply into the modem, then plug the other end into an electrical outlet.
- After you plug in the modem, wait for it to connect to the network (indicated by a GREEN light next to the  icon).

4 Reconnect Ethernet Cables

- Reconnect any Ethernet cables that were previously plugged in.
- Routers should be only plugged into the port labeled WAN (see step 6).
- If you have totalWiFi™ leave the WAN port empty (see step 5).

5 Using totalWiFi™

- Reconnect by using the Wifi Network Name (SSID) and Wifi password that is printed on the device label.
- Test your connection.

ZYXEL

WiFi Network Name(SSID): Zyxel_xxxx

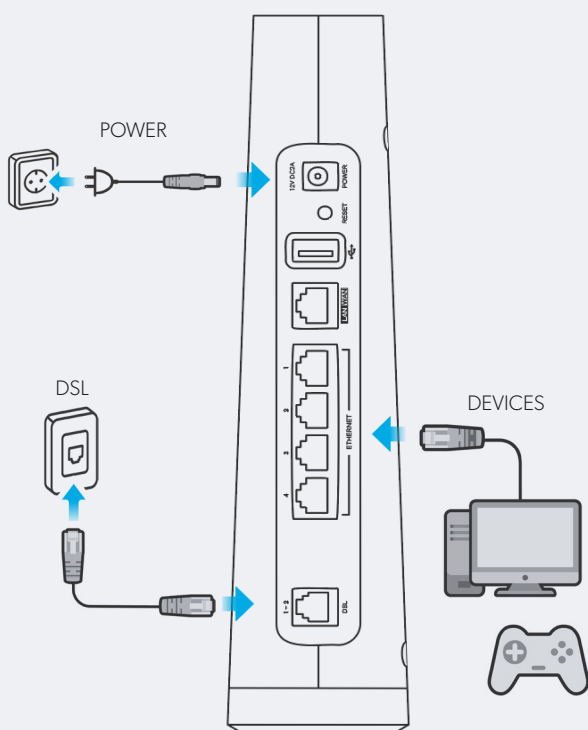
WiFi Security Type : WPA2-PSK

WiFi Password : XXXXXXXXXXXX

6 Using your own Router

- Plug your router into the port labeled WAN on the modem using an Ethernet cable.
- Wait for the connectivity light on your router to turn on.
- Test your connection.

totalWiFi™ Wiring Diagram



Router Wiring Diagram

